



2015



1:32
precision in detail

Hochwertige Sammlermodelle im exakten Maßstab 1:32

Ziel unserer Marke ist es, unseren Kunden exklusive Sammlerstücke in hochwertiger Ausführung anzubieten. Im engen Kontakt mit dem Sammler ist uns dessen Leidenschaft nicht verborgen geblieben, mit der er sein Hobby pflegt. Dieser Begeisterung begegnen wir mit gleicher Leidenschaft und haben die Absicht, unverwechselbare Miniaturen zu schaffen. Auf dem Weg dahin müssen die Modelle nicht nur aktuellen Fertigungs-Standards genügen, genauso sollen ihnen ausgesuchte Details in der Ausstattung den Charakter unverwechselbarer Miniaturen verleihen.

Es liegt in der Natur der Sache, dass Sammler-Wünsche sehr persönlichen Interessen folgen und wir nur einen Bruchteil dessen umsetzen werden, was uns in der Summe mitgeteilt wird. Technische Voraussetzungen des Zink-Spritzguss-Verfahrens setzen Grenzen, so dass Detail-Lösungen für das Modell gefunden werden müssen im Unterschied zum originalen Vorbild. Die konkrete Entscheidung für ein zukünftiges Modell-Projekt hängt natürlich von einer Reihe weiterer, praktischer Notwendigkeiten ab, denen wir zu folgen haben. Wir werden alle Modell-Vorschläge sammeln, und es bleibt unsere Aufgabe zu prüfen, ob und inwieweit wir diese in unsere strategischen Planungen mit einfließen lassen können.

Wir möchten uns an dieser Stelle für die zahlreichen Hinweise bedanken, die wir in den letzten Jahren erhalten haben und freuen uns auf weitere Rückmeldungen. Denn: wir sind auch in der Zukunft stets an der Meinung des Sammlers interessiert.

Besuchen Sie auch unsere Internetpräsenz www.weise-toys.de, und informieren Sie sich stets über unsere Neuheiten.

Ihr **weise-toys** Team

High-quality collector's models in exact scale 1:32

The aim of our brand is to offer our customer selected collector's items in high-quality execution. Keeping in close contact with the collector's whose passion has continued and grown, as they add to their collection and pursue their hobby. We meet this enthusiasm with the same passion and follow our intention making distinctive miniatures. The model construction uses contemporary manufacturing standards, at the same time all selected details in the equipment should add to the character of these distinctive miniatures.

It is natural that collector's wishes will follow very personal interests and we will realize only parts of all we are informed by our customers. Technical conditions of the zinc die-casting procedure set limits, so that detailed solutions must be found for the model may be opposed to the original model. The concrete decision for a future model project depends of course on a row of other, practical needs which we have to follow. We will collect all model proposals, and there remains our job to check whether and to what extent we can allow to flow in this onto our strategically planning with.

We would like to say many thanks for the numerous tips which we have received during the last years and we will be happy with all feedback in the future. Because we are always interested in the opinion of the farm-model collector.

Visit our website www.weise-toys.de and inform yourself about our weise-toys news.

Your **weise-toys** team

1001

FENDT FAVORIT 514 C (1995 - 1999)

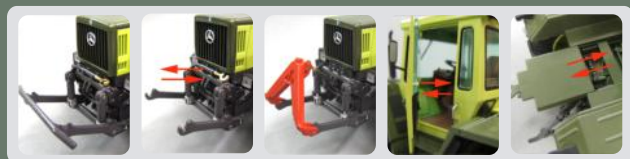
- tinted glasses
- hinged rear view mirrors
- amber beacon rotatable to raised position (working position)
- flexible roof-top antenna
- detailed cabin interior with high levelled and brightly coloured decoration
- reasonable working front- and rear linkage
- brass-metal upper link adjustable for length with 6 mm (rotating top-link)
- front linkage with 2 lower-links to be fold in upright position (road safety)
- rear linkage with locking system to hold it in raised position (secure transport-position for implements)
- tires with licensed manufacturer's engraving 'Michelin'
- accessory: front-triangle part, front-triangle part, rear draw-bar attachable



1003

MB trac 1600 turbo (W443) (1987 - 1991)

- light yellow-green / olive-green
- licence-plates (front/rear) 'NOH PW 26'
- tinted glasses
- movable doors
- rear cover part movable / detachable
- flexible roof-top antenna
- detailed cabin interior with high levelled and brightly coloured decoration
- reasonable working front- and rear linkage
- front linkage with separated upper link placed in front of the front grid (transport position), attachable at the front linkage (working position)
- rear linkage with locking system to hold it in raised position (secure transport-position for implements)
- bracket for rear upper link
- tires with licensed manufacturer's engraving 'Continental'
- accessory: front-bumper, front-triangle part, rear draw-bar attachable



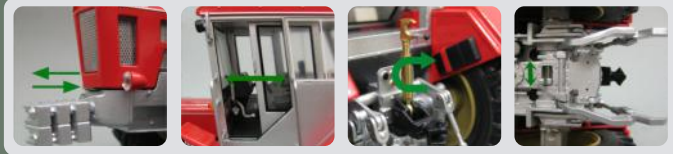
1:32



1004

Schlüter Super Trac 2000 TVL (1981 - 1986)

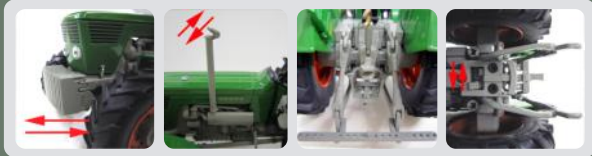
- movable engine-cover
- exhaust stack with pivoting rain-cover
- high detailed reproduction of the 200 hp, 8-cylinder Schlüter-engine
- tiltable cabin (by hydraulic at the original tractor)
- 2 movable sliding doors
- detailed cabin interior with high levelled and brightly coloured decoration
- rear linkage with brass-metal upper link, adjustable for length with 6 mm (rotating top-link)
- both lower links can be fixed in raised position by control-lever at the bottom of the model to hold implements in a stable position
- flexible hydraulic-tubes
- tires with licensed manufacturer's engraving 'Kléber'
- realistic chassis frame with all visible technical details
- accessory: 6 detachable Schlüter front-weights (Schlüter-'bananas') formed as a unit, rear draw-bar



1005

DEUTZ D 130 06 with security frame (Typ Fritzmeier) (1972 - 1974)

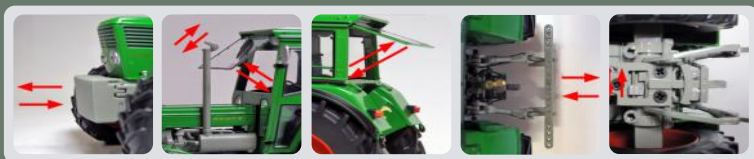
- old DEUTZ-green, chassis DEUTZ-grey, wheel rim orange-red
- exhaust stack with pivoting rain-cover
- detailed dash-board with high levelled and brightly coloured decoration
- reasonable working rear linkage
- brass-metal upper link adjustable for length with 6 mm (rotating top-link)
- rear linkage with locking system to hold it in raised position (secure transport-position for implements)
- flexible hydraulic tubes for the hydraulic cylinder at the front-axle
- tires with licensed manufacturer's engraving 'Continental'
- accessory: 15 front-weight parts (built as a unit), rear draw-bar attachable



1006

DEUTZ D 130 06 with cabin (Typ Fritzmeier) (1972 - 1974)

- old DEUTZ-green, chassis DEUTZ-grey, wheel rim orange-red
- exhaust stack with pivoting rain-cover
- detailed cabin interior with high levelled and brightly coloured decoration
- reasonable working rear linkage
- brass-metal upper link adjustable for length with 6 mm (rotating top-link)
- rear linkage with locking system to hold it in raised position (secure transport-position for implements)
- flexible hydraulic tubes for the hydraulic cylinder at the front-axle
- tires with licensed manufacturer's engraving 'Continental'
- accessory: 15 front-weight parts (built as a unit), rear draw-bar attachable



1007**FENDT FAVORIT 615 LSA (1989 - 1993)**

- movable doors
- movable windscreen and rear window
- exhaust stack with pivoting rain-cover
- transparent head- and working- lights, rear lights inserted
- flexible roof-top antenna
- detailed cabin interior with high levelled and brightly coloured decoration
- reasonable working front- and rear linkage
- brass-metal upper link adjustable for length with 6 mm (rotating top-link)
- rear linkage with locking system to hold it in raised position (secure transport-position for implements)
- flexible hydraulic tubes at the right side
- tires with licensed manufacturer's engraving 'Michelin'
- accessory: front-weight part, built as a concrete block, front-triangle part, rear draw-bar
- separate sheet with towing hook attached (for optional assembling)

**1008****FENDT tool carrier 360 GT (1984 - 1996)**

- suitable pivot joint at the central frame with rigid assembled front-axle
- movable doors
- movable windscreen and rear window
- forwards tiltably platform
- platform gates movable
- transparent head- and working- lights, rear lights inserted
- sideways spreader pivotable (for application with twin-tires)
- flexible roof-top antenna
- detailed cabin interior with high levelled and brightly coloured decoration
- reasonable working rear linkage
- brass-metal upper link adjustable for length with 6 mm (rotating top-link)
- rear linkage with locking system to hold it in raised position (secure transport-position for implements)
- tires with licensed manufacturer's engraving 'Kléber'
- accessory: rear draw-bar attachable

**1009****Unimog 406 (U84) with hardtop (type Eller) (1971 - 1989)**

- sap-green
- detachable hardtop
- licence-plates (front/rear) 'UN WT 132'
- tiltable platform to the right side
- platform gates movable and detachable
- triangle cover part at flat-bed attachable
- movable doors
- transparent head- and working-lights and rear lights inserted
- detailed cabin interior with high levelled and brightly coloured decoration
- reasonable working front- and rear linkage
- brass-metal upper link adjustable for length with 6 mm (rotating top-link)
- rear linkage with locking system to hold it in raised position (secure transport-position for implements)
- both axles with spring suspension
- tires with licensed manufacturer's engraving 'Michelin'
- accessory: front-triangle part, 2 draw-bar: short (front), long (rear)



1010**MB-trac 1500 'Knicknase' (kinky nose) (W443) (1980 - 1987)**

- light yellow-green / olive-green
- exhaust stack with pivoting rain-cover
- high-positioned air-intake
- transparent head- and working- lights, rear lights inserted
- flexible roof-top antenna
- movable doors
- detailed cabin interior with high levelled and brightly coloured decoration
- rear cover part movable / detachable
- reasonable working rear linkage
- rear linkage with locking system to hold it in raised position (secure transport-position for implements)
- bracket for rear upper link
- tires with licensed manufacturer's engraving 'Continental'
- accessory: rear draw-bar attachable

**1011****FENDT tool carrier 360 GT with beet-hoe (1984 - 1996)**

- beet-hoe attachable as intermediate-axle implement, possible for transport- and working-position (adjustable hydraulic)
- wheeling handling-aid detachable: 'FENDT-Einmannsystem' (one-man-system)
- suitable pivot joint at the central frame with rigid assembled front-axle
- movable doors, movable windscreen and rear window
- transparent head- and working- lights, rear lights inserted
- sideways spreader pivotable (for application with twin-tires)
- flexible roof-top antenna
- reasonable working front- and rear linkage
- brass-metal upper link adjustable to the length for 6 mm (rotating top-link)
- rear linkage with locking system to hold it in raised position (secure transport-position for implements)
- rear axle with crop-tires
- tires with licensed manufacturer's engraving 'Kléber'
- accessory: rear draw-bar attachable

**1012****Unimog 406 (U84) closed cabin (1971 - 1989)**

- sea-green
- licence-plates (front/rear) 'OS ZI 406'
- tiltable platform to the right side
- platform gates movable and detachable
- triangle cover part at flat-bed attachable
- movable doors
- transparent head-lights and rear lights inserted
- detailed cabin interior with high levelled and brightly coloured decoration
- both axles with spring suspension
- spare wheel at the left side
- tires with licensed manufacturer's engraving 'Continental'
- spare wheel at the left side
- accessory: platform cover detachable

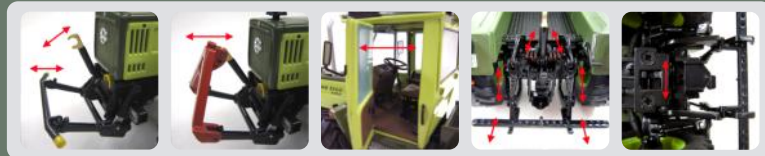


1013

MB-trac 1100 (W441) (1987 - 1991)

light yellow-green / olivegreen

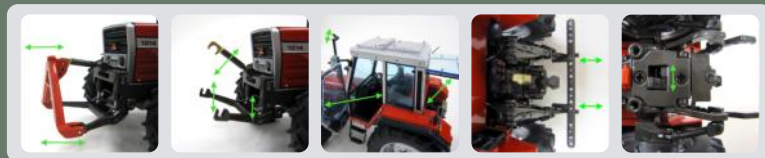
- licence-plates (front/rear) 'ST M 1800'
- tinted glasses
- transparent head- and working- lights, rear lights inserted
- flexible roof-top antenna
- movable doors
- detailed cabin interior with high levelled and brightly coloured decoration
- reasonable working front- and rear linkage
- brass-metal upper link adjustable for length with 6 mm (rotating top-link)
- rear linkage with locking system to hold it in raised position (secure transport-position for implements)
- tires with licensed manufacturer's engraving 'Continental'
- accessory: front-bumper, front-triangle part, rear draw-bar attachable

**1014**

Massey Ferguson 1014 (1978 - 1985)

MF-red/silver, chassis MF-grey

- tinted glasses
- transparent head- and working- lights, rear lights inserted
- movable doors and rear window
- flexible roof-top antenna
- detailed cabin interior with high levelled and brightly coloured decoration
- reasonable working front- and rear linkage
- brass-metal upper link adjustable for length with 6 mm (rotating top-link)
- rear linkage with locking system to hold it in raised position (secure transport-position for implements)
- tires with licensed manufacturer's engraving 'Continental'
- accessory: front-triangle part, rear draw-bar attachable

**1015**

Landini 10000 (1986 - 1990)

Landini-blue / Landini-grey

- tinted glasses
- transparent head- and working- lights, rear lights inserted
- movable doors and rear window
- flexible roof-top antenna
- detailed cabin interior with high levelled and brightly coloured decoration
- reasonable working rear linkage
- brass-metal upper link adjustable for length with 6 mm (rotating top-link)
- rear linkage with locking system to hold it in raised position (secure transport-position for implements)
- tires with licensed manufacturer's engraving 'Continental'
- accessory: 10 front-weight parts (built as a unit), rear draw-bar attachable



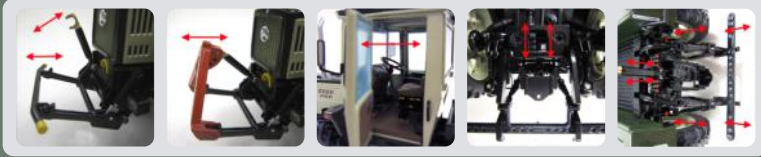
1:32



1016

MB-trac 1100 with crop-tires (W441) (1987 - 1991)

- thistle-green metallic / dark-green
- licence-plates (front/rear) 'OS WE 992'
- tinted glasses
- transparent head- and working- lights, rear lights inserted
- flexible roof-top antenna
- movable doors
- detailed cabin interior with high levelled and brightly coloured decoration
- reasonable working front- and rear linkage
- brass-metal upper link adjustable for length with 6 mm (rotating top-link)
- rear linkage with locking system to hold it in raised position (secure transport-position for implements)
- tires with licensed manufacturer's engraving 'Kléber'
- accessory:- front-bumper, front-triangle part, rear draw-bar attachable



1017

FENDT Xylon 524 (1994 - 2004)

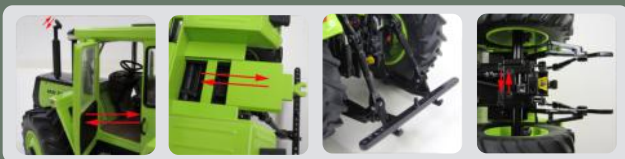
- licence-plates (front/rear) 'ST AR 128'
- movable doors
- hinged rear view mirrors
- amber beacon rotatable to raised position (working position)
- flexible roof-top antenna
- transparent head- and working-lights, rear lights inserted
- flexible roof-top antenna
- detailed cabin interior with high levelled and brightly coloured decoration
- reasonable working front- and rear linkage
- brass-metal upper link adjustable for length with 6 mm (rotating top-link)
- rear linkage with locking system to hold it in raised position (secure transport-position for implements)
- flexible hydraulic tubes
- tires with licensed manufacturer's engraving 'Michelin'
- accessory: front-weight part, front-triangle part, rear draw-bar attachable



1018

MB-trac 1300 'Knicknase' (kinky nose) with terra-tires (W443) (1980 - 1987)

- light yellow-green / olive-green
- exhaust stack with pivoting rain-cover
- high-positioned air-intake
- transparent head- and working- lights, rear lights inserted
- flexible roof-top antenna
- movable doors
- detailed cabin interior with high levelled and brightly coloured decoration
- rear cover part movable / detachable
- reasonable working rear linkage
- rear linkage with locking system to hold it in raised position (secure transport-position for implements)
- bracket for rear upper link
- tires with licensed manufacturer's engraving 'Continental'
- accessory: rear draw-bar attachable



1019

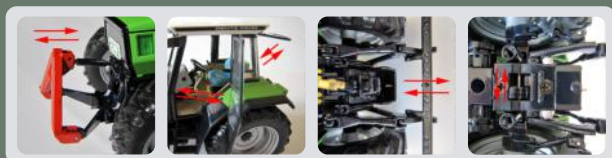
FENDT Xylon 522 with front-loader (1994 - 2004)

- fully functional front-loader part with parallel motion for the bucket
- licence-plates (front/rear) 'ST AS 678'
- movable doors, hinged rear view mirrors
- amber beacon rotatable to raised position (working position)
- flexible roof-top antenna
- transparent head- and working-lights, rear lights inserted
- flexible roof-top antenna
- detailed cabin interior with high levelled and brightly coloured decoration
- reasonable working front- and rear linkage
- brass-metal upper link adjustable for length with 6 mm (rotating top-link)
- rear linkage with locking system to hold it in raised position (secure transport-position for implements)
- flexible hydraulic tubes
- tires with licensed manufacturer's engraving 'Michelin'
- accessory: rear draw-bar attachable

**1020**

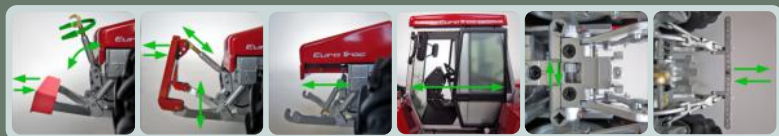
DEUTZ-FAHR AgroStar DX 6.31 (1990 - 1993)

- licence-plates (front/rear) 'ST SC 762'
- transparent head- and working- lights, rear lights inserted
- movable doors and rear window
- hinged rear view mirrors
- detailed cabin interior with high levelled and brightly coloured decoration
- reasonable working front- and rear linkage
- brass-metal upper link adjustable for length with 6 mm (rotating top-link)
- rear linkage with locking system to hold it in raised position (secure transport-position for implements)
- tires with licensed manufacturer's engraving 'Kléber'
- front-triangle part attachable
- accessory: rear draw-bar attachable

**1021**

Schlüter Euro Trac 1900 LS (1991 - 1994)

- slidable ballast weight
- exhaust stack with pivoting rain-cover
- tiltable cabin, sliding doors
- detailed cabin interior with high levelled and brightly coloured decoration
- instrument panel and driver's seat (as a unit) 180° rotatable, (backward driving while working with implements)
- The function is shown at an enclosed instruction leaflet.
- reasonable working front- and rear linkage
- brass-metal upper link adjustable for length with 6 mm (rotating top-link)
- rear linkage with locking system to hold it in raised position (secure transport-position for implements)
- realistic chassis frame with all visible technical details
- tires with licensed manufacturer's engraving 'Kléber'
- accessory: front-bumper, front-triangle part, rear draw-bar attachable



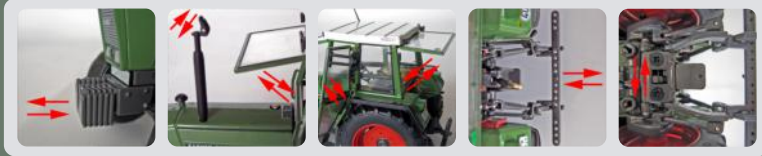
1:32



1022

FENDT FARMER 306 LS (1984 - 1988)

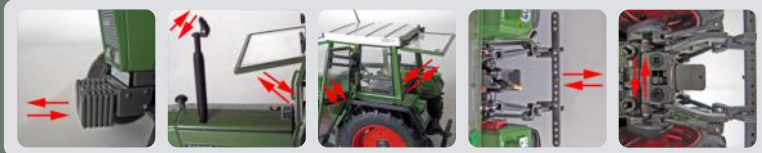
- licence-plates (front/rear) 'ST EU 826'
- transparent head- and working- lights, rear lights inserted
- movable doors
- movable wind-shield and rear window
- flexible roof-top antenna
- exhaust stack with pivoting rain-cover
- detailed cabin interior with high levelled and brightly coloured decoration
- reasonable working front- and rear linkage
- brass-metal upper link adjustable for length with 6 mm (rotating top-link)
- rear linkage with locking system to hold it in raised position (secure transport-position for implements)
- tires with licensed manufacturer's engraving 'Continental'
- accessory: 6 front-weight parts (built as a unit), rear draw-bar attachable



1023

FENDT FARMER 309 LSA (1984 - 1988)

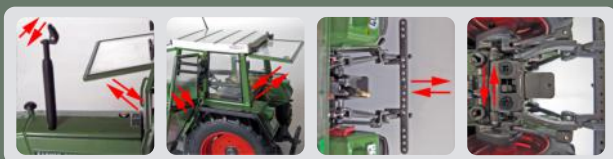
- licence-plates (front/rear) 'ST M 5882'
- transparent head- and working- lights, rear lights inserted
- movable doors
- movable wind-shield and rear window
- flexible roof-top antenna
- exhaust stack with pivoting rain-cover
- detailed cabin interior with high levelled and brightly coloured decoration
- reasonable working front- and rear linkage
- brass-metal upper link adjustable for length with 6 mm (rotating top-link)
- rear linkage with locking system to hold it in raised position (secure transport-position for implements)
- tires with licensed manufacturer's engraving 'Continental'
- accessory: 6 front-weight parts (built as a unit), rear draw-bar attachable



1024

FENDT FARMER 306 LS with front-loader (1984 - 1988)

- fully functional front-loader part with parallel motion for the bucket
- licence-plates (front/rear) 'ST LM 213'
- transparent head- and working- lights, rear lights inserted
- movable doors
- movable wind-shield and rear window
- flexible roof-top antenna
- exhaust stack with pivoting rain-cover
- detailed cabin interior with high levelled and brightly coloured decoration
- reasonable working front- and rear linkage
- brass-metal upper link adjustable for length with 6 mm (rotating top-link)
- rear linkage with locking system to hold it in raised position (secure transport-position for implements)
- tires with licensed manufacturer's engraving 'Continental'
- accessory: rear weight part attachable, built as a concrete block together with a bench vice, rear draw-bar attachable

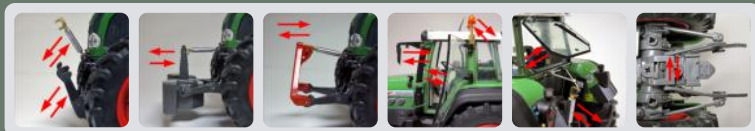


1025**FENDT FAVORIT 926 Vario (1996 - 2000) (1st generation)**

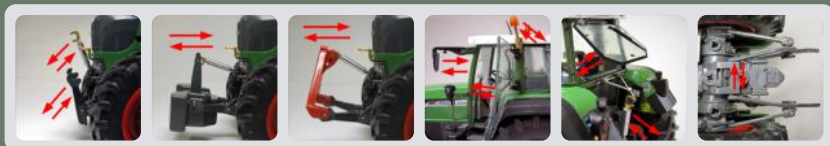
- licence-plates (front/rear) 'UN NE 24'
- tinted glasses
- transparent head- and working- lights, rear lights inserted
- movable doors, hinged rear view mirrors
- amber beacon rotatable to raised position (working position)
- flexible roof-top antenna
- exhaust stack with pivoting rain-cover
- detailed cabin interior with high levelled and brightly coloured decoration
- reasonable working front- and rear linkage
- brass-metal upper link adjustable for length with 6 mm (rotating top-link)
- front linkage with 2 lower-links to be fold in upright position (road safety)
- rear linkage with locking system to hold it in raised position (secure transport-position for implements)
- pivoting holder for the front- and rear upper link
- tires with licensed manufacturer's engraving 'Michelin'
- accessory: front-weight part, front-triangle part attachable

**1026****FENDT FAVORIT 926 Vario (1999 - 2002) (2nd generation)**

- licence-plates (front/rear) 'WAF DW 296'
- tinted glasses
- transparent head- and working-lights, rear lights inserted
- movable doors, hinged rear view mirrors
- 2 amber beacon rotatable to raised position (working position)
- flexible roof-top antenna
- exhaust stack with pivoting rain-cover
- detailed cabin interior with high levelled and brightly coloured decoration
- reasonable working front- and rear linkage
- brass-metal upper link adjustable for length with 6 mm (rotating top-link)
- front linkage with 2 lower-links to be fold in upright position (road safety)
- rear linkage with locking system to hold it in raised position (secure transport-position for implements)
- holder for the front upper link
- tires with licensed manufacturer's engraving 'TRELLEBORG'
- accessory: front-weight part, front-triangle part attachable

**1027****FENDT Vario 930 TMS (2002 - 2007)**

- licence-plates (front/rear) 'WAF WD 927'
- tinted glasses
- transparent head- and working- lights, rear lights inserted
- movable doors
- hinged rear view mirrors
- 2 amber beacon rotatable to raised position (working position)
- flexible roof-top antenna
- exhaust stack with pivoting rain-cover
- detailed cabin interior with high levelled and brightly coloured decoration
- reasonable working front- and rear linkage
- brass-metal upper link adjustable for length with 6 mm (rotating top-link)
- front linkage with 2 lower-links to be fold in upright position (road safety)
- rear linkage with locking system to hold it in raised position (secure transport-position for implements)
- tires with licensed manufacturer's engraving 'TRELLEBORG'
- accessory: front-weight part, front-triangle part attachable



1:32

1028

DEUTZ-FAHR AgroStar 6.38 (1993 - 1995)

- licence-plates (front/rear) 'GT BL 48'
- transparent head- and working- lights, rear lights inserted
- movable doors and rear window
- hinged rear view mirrors
- detailed cabin interior with high levelled and brightly coloured decoration
- reasonable working front- and rear linkage
- brass-metal upper link adjustable for length with 6 mm (rotating top-link)
- rear linkage with locking system to hold it in raised position (secure transport-position for implements)
- tires with licensed manufacturer's engraving 'Kléber'
- accessory: front-triangle part, rear draw-bar attachable



1029

CLAAS XERION 4000 TRAC VC (2014 -)

- cabin 180° rotatable (lifting / turning / putting down)
- licence-plates (front/rear) 'GT CL 7011'
- tinted glasses
- transparent head- and working- lights, rear lights inserted
- movable left door
- hinged rear view mirrors
- 2 amber beacon
- detailed cabin interior with high levelled and brightly coloured decoration
- reasonable working front- and rear linkage
- brass-metal upper link adjustable for length with 6 mm (rotating top-link)
- rear linkage with locking system to hold it in raised position (secure transport-position for implements)
- independent steering front- and rear axle
- realistic chassis frame with all visible technical details
- tires with licensed manufacturer's engraving 'TRELLEBORG'
- accessory: front-weight part, base-plate for mounting additional weight-parts behind the cabin, 10 additional weight-parts attachable (max. 3 on top of the front weight part, max. 7 on top of the base-plate)

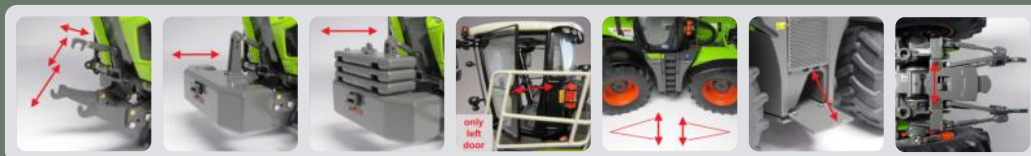


1:32

1030

CLAAS XERION 4000 SADDLE TRAC (2014 -)

- licence-plates (front/rear) 'GT CL 7039'
- tinted glasses
- transparent head- and working- lights, rear lights inserted
- movable left door
- hinged rear view mirrors
- 2 amber beacon
- detailed cabin interior with high levelled and brightly coloured decoration
- reasonable working front- and rear linkage
- brass-metal upper link adjustable for length with 6 mm (rotating top-link)
- rear linkage with locking system to hold it in raised position (secure transport-position for implements)
- independent steering front- and rear axle
- realistic chassis frame with all visible technical details
- tires with licenced manufacturer's engraving 'TRELLEBORG'
- accessory: front-weight part attachable,
3 additional weight-parts attachable (on top of the front weight part)



1031

DEUTZ-FAHR Agrottron 6190 C Shift (2013 -)

- licence-plates (front/rear) 'ST D 618'
- tinted glasses
- transparent head- and working- lights, rear lights inserted
- movable doors
- hinged rear view mirrors
- 2 amber beacon rotatable to raised position (working position)
- detailed cabin interior with high levelled and brightly coloured decoration
- reasonable working front- and rear linkage
- brass-metal upper link adjustable for length with 6 mm (rotating top-link)
- front linkage with 2 lower-links
- rear linkage with locking system to hold it in raised position (secure transport-position for implements)
- tires with licensed manufacturer's engraving 'TRELLEBORG'
- accessory: front-weight part, front-triangle part attachable

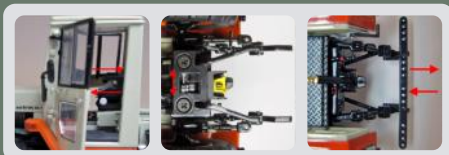


pre-series

1032

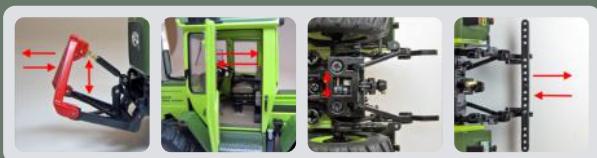
MB-trac 65/70 (W440) (1973 - 1975)

- orange-red / pebble-grey
- licence-plates (front/rear) 'NOH Y 396'
- transparent head-lights inserted
- movable doors
- detailed cabin interior with high levelled and brightly coloured decoration
- rear cover part movable / detachable
- reasonable working rear linkage
- rear linkage with locking system to hold it in raised position (secure transport-position for implements)
- tires with licensed manufacturer's engraving 'Continental'
- accessory: rear draw-bar attachable

**1033**

MB-trac 900 turbo (Baureihe 440) (1987 - 1991)

- light-green / olive-green
- licence-plates (front/rear) 'UN NP 651'
- transparent head-lights inserted
- movable doors
- flexible roof-top antenna
- detailed cabin interior with high levelled and brightly coloured decoration
- reasonable working front- and rear linkage
- rear linkage with locking system to hold it in raised position (secure transport-position for implements)
- tires with licensed manufacturer's engraving 'Kléber'
- accessory: front-triangle part, rear draw-bar attachable



neu
new
2015

**1034**

SAME Fortis 180 (2013 -)

- tinted glasses
- transparent head- and working- lights, rear lights inserted
- movable doors
- hinged rear view mirrors
- 2 amber beacon rotatable to raised position (working position)
- detailed cabin interior with high levelled and brightly coloured decoration
- reasonable working front- and rear linkage
- brass-metal upper link adjustable for length with 6 mm (rotating top-link)
- front linkage with 2 lower-links
- rear linkage with locking system to hold it in raised position (secure transport-position for implements)
- tires with licensed manufacturer's engraving 'TRELLEBORG'
- accessory: front-weight part, front-triangle part attachable

neu
new
2015



pre-series

1035

Lamborghini Spark 180 (2014 -)

- tinted glasses
- transparent head- and working- lights, rear lights inserted
- movable doors
- hinged rear view mirrors
- 2 amber beacon rotatable to raised position (working position)
- detailed cabin interior with high levelled and brightly coloured decoration
- reasonable working front- and rear linkage
- brass-metal upper link adjustable for length with 6 mm (rotating top-link)
- front linkage with 2 lower-links
- rear linkage with locking system to hold it in raised position (secure transport-position for implements)
- tires with licensed manufacturer's engraving 'TRELLEBORG'
- accessory: front-weight part, front-triangle part attachable

neu
new
2015



pre-series

1101

1101 FENDT FAVORIT 514C Kommunal (Municipal) (1993 - 1999)

- municipal-colour: light-orange
 - licence-plates (front) 'OAL 283'
 - accessory: front-weight part, front-triangle part attachable
- detail description see item no. 1001

**1102**

1102 FENDT FAVORIT 822 Kommunal (Municipal) (1996 - 2000)

- municipal-colour: light-orange
 - licence-plates (front/rear) 'OAL 379'
 - accessory: front-weight part, front-triangle part attachable
- detail description see item no. 1025

**1104**

FENDT tool carrier 360 GT Kommunal (Municipal) (1984 - 1996)

- municipal-colour: light-orange
 - accessory: rear draw-bar attachable
- detail description see item no. 1008

**1106**

FENDT Xylon 524 with front-loader Kommunal (Municipal) (1994 - 2004)

- municipal-colour: light-orange
 - licence-plates (front/rear) 'OAL 1209'
 - accessory: rear draw-bar attachable
- detail description see item no. 1019



1107

MB-trac 1100 Kommunal (Municipal) (W441) (1987 - 1991)

municipal-colour: deep-orange / black, wheel rims black
 - licence-plates (front/rear) 'UN 815'
 - accessory: front-bumper, front-triangle part, rear draw-bar attachable
 detail description see item no. 1013



2021

MB-trac 1000 'Family' (W441) (1987 - 1991)

'Family'-green / black (original Mercedes-Benz delivery)
 - licence-plates (front/rear) 'R / H 5482'
 - accessory: front-bumper, front-triangle part, rear draw-bar attachable
 detail description see item no. 1013
 limited edition: 1.500 pieces



2028

Unimog 406 (U84) Deutsche Bundesbahn (German Federal Railways) (1971 - 1989)

black-grey
 - licence-plates (front/rear) 'DB 53 384'
 detail description see item no. 1012
 limited edition: 500 pieces



2011

Unimog 406 (U84) FEUERWEHR (FIRE BRIGADE) (1971 - 1989)

fire-red
 - licence-plates (front/rear) 'TE 286'
 - 'FEUERWEHR' / logo 'Freiwillige Feuerwehr' / 'LZ Riesenbeck' / logo 'Tel. 112'
 - accessory: platform-cover detachable
 detail description see item no. 1012



2027

Unimog 406 (U84) Deutsches Rotes Kreuz (German Red Cross) (1971 - 1989)

light-beige
 - 'Red Cross' (engine cover / platform cover) / logo 'DEUTSCHES ROTES KREUZ' and 'Red Cross' (doors / platform cover), 2 blue beacon
 - licence-plates (front/rear) 'MS 2085'
 detail description see item no. 1012
 limited edition: 500 pieces

neu
new
2014



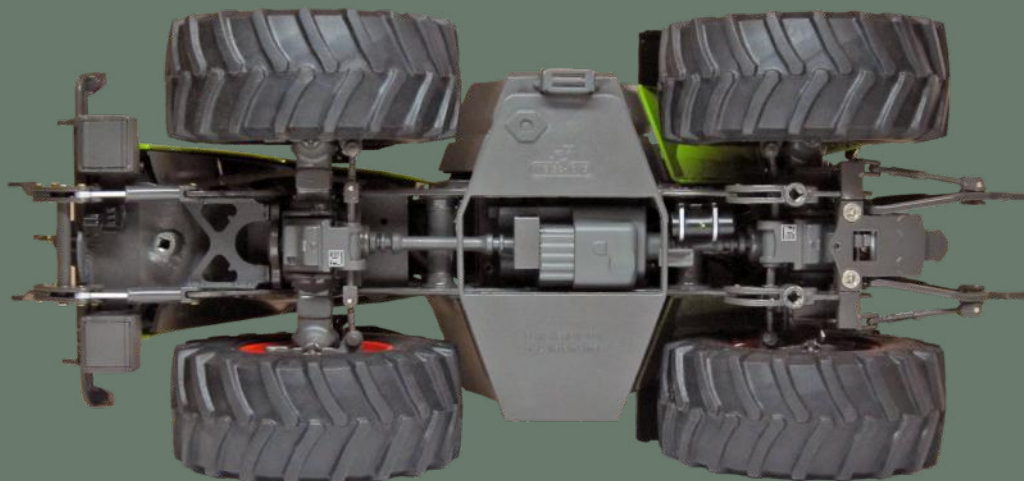
1:32 precision in detail



1029 CLAAS Xerion 4000 TRAC VC



Side view with cabin turned backward 180°.



View from below with high detailed chassis.



field tire



row-crop tire




terra tire



lawn and garden tire

The field tire is used as the normal agricultural tire different kind of works.
The row-crop tire allows driving through all kind of plants (beet or potato) e.g. spreading fertilizer.
The terra tire is necessary for humid soil, the enlarged contact patch protects the tractor against sinking.
The lawn and garden tire with its smooth profile is used for industrial or communal purpose.

Hergestellt unter Lizenz der / Manufactured under licence of / Fabriqué sous licence de:
Hergestellt unter der Lizenz der CLAAS Service and Parts GmbH • Verwendung der Marke CONTINENTAL mit freundlicher Genehmigung der Continental AG • Markenzeichen SAME, DEUTZ, Lamborghini benutzt unter Lizenz der SAME DEUTZ-FAHR Group S.p.A. • FENDT ist eine worldwide brand of AGCO. Produced under licence from AGCO International GmbH • Trademark Kleber is used under licence from Michelin Group Companies • Trademark Landini is used under licence of AGCO TRACTORS S.p.A. • Trademark Massey Ferguson is used under licence of AGCO Corporation • "Mercedes Benz",  and the design of the enclosed product are subject to intellectual property protection owned by Daimler AG. They are used by Weise GmbH & Co. KG under licence • Trademark MICHELIN is used under licence from Michelin Lifestyle Ltd. • Trademark NOKIAN mit freundlicher Genehmigung der Nokian Heavy Tyres Ltd. • Verwendung der Schlüter-Markenzeichen mit freundlicher Genehmigung der Profi Gigant GdbR • Verwendung der Marke Trelleborg mit freundlicher Genehmigung von Trelleborg Wheel Systems Germany GmbH • weise-toys is a registered Trademark by Weise GmbH & Co. KG, 59357 Werne.

Weise GmbH & Co. KG
Postfach 1414
59357 Werne
GERMANY

phone +49 (0) 23 89 92 88 50
fax +49 (0) 23 89 92 88 520
e-mail mail@weise-toys.de
www.weise-toys.de

Technische Änderungen sowie Irrtümer
und Liefermöglichkeiten vorbehalten.
Technical changes and errors excepted.